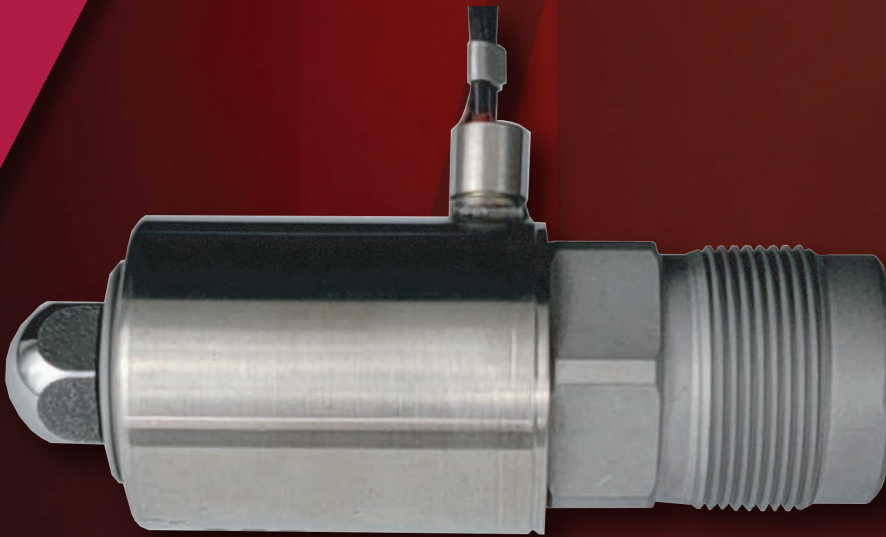
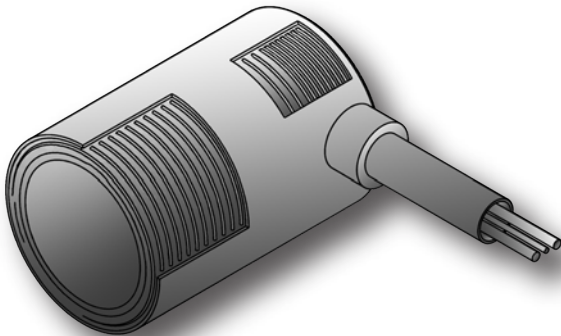


# Heated Tapered Nozzle



## Maximum Heat Transfer and Uniformity

- Swaged, Stainless Sleeve Heater with Replaceable Thermocouple
- Maximum heat transfer and uniformity
- Precision CNC wound, high surface area heating element
- Three thermocouple locations at 120 degrees
- Long-Lasting
- Optional 45 degree lead toward the tip



## Superior Nozzle Body Design

- Stainless PM (particle metal) Tool Steel Nozzle with Continuous Taper I.D.
- ZROC™ (Zeiger Release Optical Clarity) metallurgy is optimized for clear part production such as Polycarbonate (PC) and Acrylic (PMMA)
- ZHCW20™ option for maximum corrosion and good wear resistance. Alleviates sulfidation associated with processing sulfone polymers
- ZHCW9™ for maximum wear resistance to glass filled resins and good corrosion resistance
- Ideal for Halogen Free Fire Retardants (HFFR), flexible and rigid Polyvinyl Chloride (PVC), frequent color changes or general purpose molding
- Self-cleaning (eliminates black specs)
- Less shear (eliminates bubbles and streaking)
- Use with any size injection molding machine
- 4.25", 5.25", 6.25", 7.25" Standard Lengths
- Customizable



Spark  
Industries

fastheatbyspark.com  
Tel: 574.606.4243



ZEIGER  
Industries

zeigerindustries.com  
Tel: 330.484.4413